

# ClaraWell<sup>Health</sup>

Your Personal Health Assistant - For Life

*From Prevention to Specialized Care*

---

By Godly Labs Inc.

# *Why does healthcare feel so Disconnected and unclear?*



*Patients are lost.*

*Chronic illness is often ignored.*

*There's no trusted place to start — or continue — your health journey.*

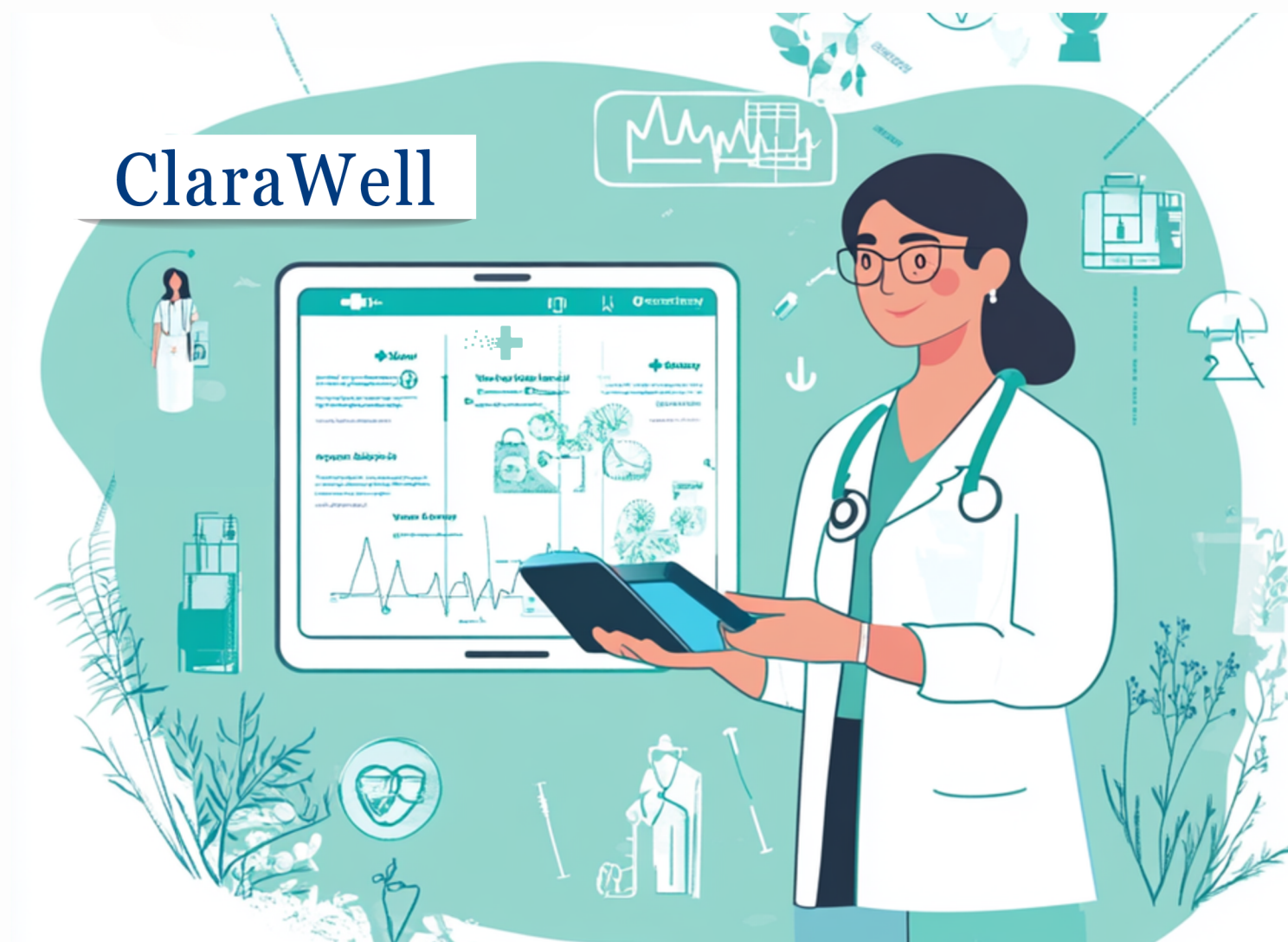
*In the space between waiting rooms and worry,  
ClaraWell quietly began to take shape*



# *Introducing ClaraWell*

What if your health journey had a companion

—  
One that learned to understand you and was  
built to grow with you?



*ClaraWell isn't here to be downloaded.*

**She's here to become someone you trust.**



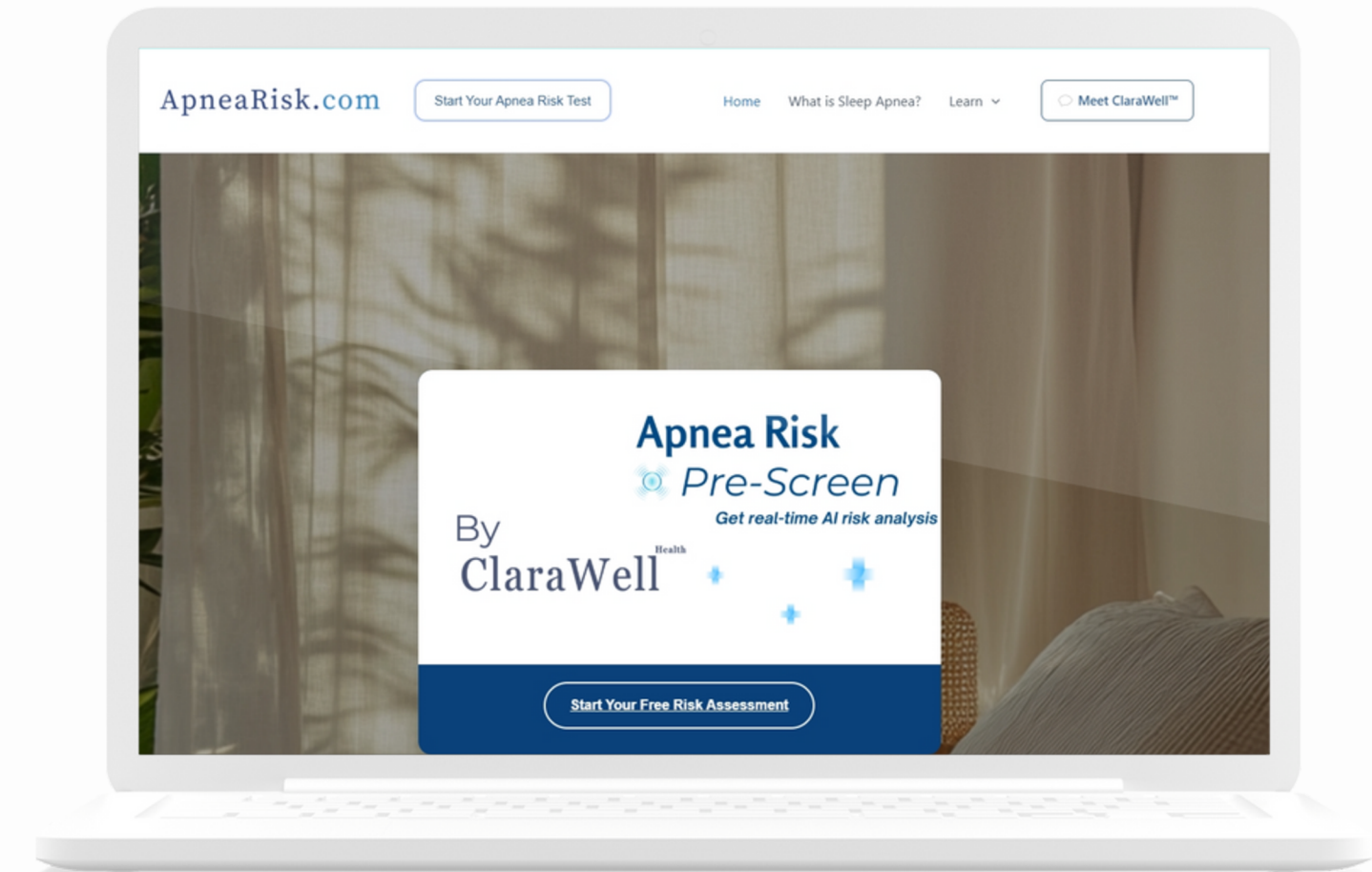
# 📶 *No Risk, No Reward.* 📶



ADHDRisk.com

Powered by ClaraWell™

Live LLM screeners.  
No sign-ups.  
No friction.  
Just care that learns.



ApneaRisk.com

Powered by ClaraWell™

*The First Encounters*

# Live. Learning. Evolving — and already helpful.



# ClaraWell

*At the front desk of the internet hospital*



ClaraWell™ cuts through the chaos  
Just real help, from the very first hello.  
*Best of all? Her first hello keeps getting smarter.*



ADHDRisk.com



ApneaRisk.com

*More conversations. More care.*

**Live. Learning. Expanding — *one person at a time.***

# *The Market Opportunity*

*This isn't niche. This is everyone. Everywhere.*

*This is Healthcare.*

ClaraWell *A global opportunity.*

**And a commitment to care for everyone in it.**

# *The Business Model*



## Freemium

Free core, with  
premium upgrades



## Enterprise Licensing

Clinics, Insurers,  
Universities, Employers



## Insights

Anonymous, compliant  
longitudinal data modeling.

*Transforming medicine's most valuable currency, data.*

**Into clarity, connection, and care.**



# »»»» *Traction* »»»»

## Entity & Infrastructure

U.S. C-Corp  
Canadian Research Corp.  
Live infrastructure.

Built to operate  
Built to scale.

## Healthcare in the Wild

ClaraWell™ is live.  
More conditions.  
More care. On the way.

Where ClaraWell™ begins,  
One conversation at a time.

## Clinical Partnerships

Advised by 10+ specialists  
across key verticals.  
Built on clinical insight.

Guided by frontline expertise,  
Not assumptions.

*ClaraWell isn't a concept.*

**She's already learning — She's already helping.**

# »»» *The Vision* «««

*From the first hello to lifelong care.*



Chronic condition tracking



Personalized behavior nudging



Mental health support



Clinician-ready insights and summaries



Full patient journey continuity



*ClaraWell isn't just AI.*

**Each moment builds the healthcare LLM of the future.**

# ≡ *The Team* ≡

*Decades of healthcare, tech, and ops experience.*

15+ years in clinical  
medicine — across sleep,  
psychiatry, and operations.

Co-Founded and led 5 clinics.  
Now building as a clinical &  
technical founder.



**Eric Blum**  
CEO



**Martin Blum**  
CTO

25+ years of healthcare IT,  
systems design, and digital  
infrastructure.

Led IT strategy for 40,000+  
healthcare professionals.  
Technical systems architect.

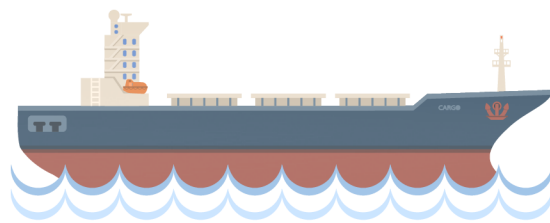
*Built by experience.*

*Designed for everyone.*



# *ClaraWell vs. Big Tech*

## *Validation in a new marketplace.*



**Big Tech**

The oil tanker—powerful, but slow to turn.

Built for closed ecosystems  
Hard to adapt beyond their platform  
Branded by engineers, not by empathy.



**ClaraWell™**

The speedboat—fast, focused, and personal.

Open to all users, any platform  
Already live, already learning  
Warm, branded, and deeply human.

# **We are live—with heart, agility, and trust.**

# *The Ask*

*Join the story. Shape the future.*

Alongside:

Clinical and Research Collaborators

Media Outlets

Strategic Partners

A \$750K pre-seed round is open.

Accelerating. Intentionally. Now.

---

*Most will watch it happen.*

**You're invited to build *her* with us.**

# ClaraWell<sup>Health</sup>

Clarity in Health, Wellness for Life.



Hi, I'm ClaraWell. Let's build the future of care — together.

Your Response: Hi Clara! I'm in. What are we building?



We're building care that feels more human —  
even if it took AI to get us here..

Type your message...

Clear

*ClaraWell wasn't invented.*  
**She's inevitable.**